



Canal View

Canal View is located in Dilmunia Island in Muharraq and has been developed over an area of 13,068 square metres. The luxurious property is walking distance from Dilmunia mall, located in proximity to Bahrain's main arterial roads, social infrastructure and the main airport.

The mixed use developments consists of 246 high end studio, 1-bed, 2-bed, 3-bed and 4-bed apartments including private gardens and approximately 35 retail and F&B outlets. Located on the most dramatic stretches of Dilmunia, this is canal-side living at its finest. In the heart of Dilmunia, the residences at Canal View are set in beautifully landscaped gardens, next to a sweeping canal promenade. Residents can also enjoy the benefits of an exclusive private club, incorporating a range of sporting and entertainment facilities. Dilmunia canal living does not get more sophisticated than this.

Canal View is nestled within The spectacular 1.6 km canal with dual pedestrian access which provides ideal spaces for retail and F&B outlets. Canal View is also a uniquely designed complex that features a breathtaking public park across the canal's footbridge. Other iconic installations include distinctive water features such as the waterfall footpath and fountain system.

Canal View's lifestyle features fountains as well as a main waterfall feature. An indoor pool, an outdoor pool, gym facilities, multi-sport court and club/ lounge facilities all set within the complex. Adding to the amenities, Canal View offers rooftop garden shaded space, kitchen BBQ facilities and 17 unique apartments with private garden space.

For resident-owners, investing with Canal View offers much more than the brick and mortar space that is defined by the boundary of a single apartment, it provides unlimited access to a lifestyle of luxury.

- Owner: Naseej BSC
- Developer: Canal View Development Company
- Value: BD 25m
- Status: Piling contract awarded and piling works to start shortly, full construction works expected to begin in early September 2017.
- Type of developments (with details): (residential? Hotels? Commercial? Etc...): Mixed use development includes two hundred and forty six high-end residential apartments including studio, one bed, two bed, three bed and four bed apartments and apartments with private gardens. The project also includes approximately 35 high-end retail and F&B outlets. Each of the four towers includes private rooftop gardens for the tenants and their guests, fitted with BBQ areas, kitchens and other facilities. Residents will have access to a fully fitted gym and

shower facilities, indoor and outdoor pools, and multi-purpose court.



[IKEA](#)

The biggest IKEA store in the GCC with a built-up area in excess of 30,000 sqm

- Owner: IKEA Saudi
- Developer: IKEA Saudi
- Value: BD 47 mn
- Status: Under construction
- Area: 45,000 sqm
- Purpose: Enhance the tourism infrastructure in the Kingdom and support the national economy
- Type of Developments (with details) : (residential? Hotels? Commercial? Etc...): Retail
- Upcoming developments/ expansions: N/A
- Any other information you find relevant for Investors: N/A
- High resolution images of existing project and upcoming project (CGI drawings): N/A



[Plaza Hotel](#)

Situated in Manama, within 2.2 km of Bahrain National Museum and 3.2 km of Bahrain City Centre Mall, Bahrain Plaza Hotel provides accommodation with free WiFi. Located around 3.3 km from Wahooo! Waterpark, the hotel is also 4.1 km away from Bahrain International Exhibition & Convention Centre. Bahrain Mall is 5 km from the property.

- Ratings: 3 Stars
 - Type: Domestic
 - Specialty: Urban
 - Operator: NA
 - No. of Keys: 62 Keys
 - No. of Employees: NA
 - Registration Date: NA
 - Area: Al Qudaibiya
 - Address: Building No. 481, Road No. 333, Block No. 308
-



[Palm Suite Apartments](#)

Just a short walk from Manama's marina and beach, the Palm Suite offers an outdoor pool and sauna. All studios include free Wi-Fi and minibars. Bahrain International Airport is 10 minutes' drive away. Thanks to the hotel's central location, guests can reach many popular food courts, restaurants and bars within a 10-minute walk. For those who wish to dine on site, the Palm has its own restaurant. Palm Suite Luxury Furnished Apartment provides well designed studios with modern furniture and air conditioning. Each has a private bathroom with a bathtub and toiletries. Bahrain National Museum is located 20 minutes' walk from the property and Al Fateh Mosque is less than 10 minutes' drive away. Free private parking is possible on site.

- Ratings: 3 Stars
 - Type: Domestic
 - Specialty: Urban
 - Operator: Palm Suites Apartments
 - No. of Keys: 29 Keys
 - No. of Employees: 5 Employees
 - Registration Date: 26/6/1983
 - Area: Al Hoorah
 - Address: Building No. 410, Road No. 1912, Block No. 319
-



[Pearl Bahrain Suites](#)

This property is 15 minutes walk from the beach. Located in the upcoming Juffair District of Manama, Pearl Suites offers self-catering accommodation with free Wi-Fi. It features an outdoor pool and a well-equipped gym with steam bath. Suites at Pearl Bahrain Suites are fitted with modern furnishings and overlook the Arabian Gulf. Each includes a living room with a dining area and a flat-screen TV. The kitchen includes a fridge and a microwave. Pearl Bahrain Suites is located within a 10-minute drive from downtown Manama and Bahrain National Museum. Bahrain World Trade Centre and Bahrain Financial Harbour are situated within 4 km from the hotel.

- Ratings: 3 Stars
- Type: Domestic
- Specialty: Urban
- Operator: Pearl Bahrain Suites
- No. of Keys: 94 Keys
- No. of Employees: 7 Employees
- Registration Date: 3/11/2010
- Area: Al Juffair
- Address: Building No. 1020, Road No. 2417, Block No. 324



[Ramee Suites - 3](#)

Conveniently located in Manama, Ramee Suites 3 Apartments is a great base from which to explore this vibrant city. The city center is short distance away and the airport can be reached within minutes. This modern hotel is in the vicinity of popular city attractions such as Poshak Fashion, Al-Reem Tours, Coral Bay.

- Ratings: 3 Stars

- Type: International
 - Specialty: Urban
 - Operator: Ramee Group
 - No. of Keys: 64 Keys
 - No. of Employees: 10 Employees
 - Registration Date: 28/10/2009
 - Area: Al Hoorra
 - Address: Building No. 382, Road No. 2011, Block No. 320
-



[Ramya Plaza](#)

- Ratings: 3 Stars
 - Type: Domestic
 - Specialty: Urban
 - Operator: Ramya Plaza
 - No. of Keys: 30 Keys
 - No. of Employees: 7 Employees
 - Registration Date: 41188
 - Area: Al Hoorra
 - Address: Building No. 225, Road No. 2006, Block No. 320
-



[Sun Shine Tower](#)

Sunshine Tower Hotel is 1350 meters away from Bahrain National Theater. The hotel lies within 15 minutes' walk of Bahrain National Museum. A 30-minute walk to the center of Manama. A theater, a museum and a mosque are set within walking distance. Rooms at Sunshine Tower Hotel feature

modern touches such as complimentary wireless internet, cable TV with on-demand movies, pay TV, an individual safe and a refrigerator. For more comfort a shower and dressing gowns are provided.

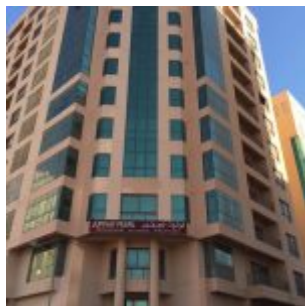
- Ratings: 3 Stars
- Type: Domestic
- Specialty: Urban
- Operator: Sun Shine Tower
- No. of Keys: 16 Keys
- No. of Employees: 7 Employees
- Registration Date: 39540
- Area: Al Hoorah
- Address: Building No. 92, Road No. 2003, Block No. 320



[Al Faris Suite-1](#)

Located in Manama's Juffair District, Al Faris Suite 1 is just a 10-minute drive from Bahrain's largest mosque, Al Fateh Grand Mosque. It offers an outdoor pool and a health club with a gym, hot tub and sauna. The self-catering apartments at Al Faris Suite are fitted with wooden furniture and tiled floors. Each apartment offers a living room with a 4-person dining table and a satellite TV. The kitchen includes a microwave, an oven and a fridge. Nearby restaurants and coffee shops are within a walking distance from Al Faris Suite 1.

- Ratings: 2 Stars
 - Type: Domestic
 - Specialty: Urban
 - Operator: Al Faris Suite-2
 - No. of Keys: 46 Keys
 - No. of Employees: NA
 - Registration Date: 30/1/2006
 - Area: Al Fateh
 - Address: Building No. 4933, Road No. 2466, Block No. 324
-



[Juffair Pearl Hotel Apartments](#)

Offering accommodation with air conditioning, Juffair Pearl Apartments is set in Juffair, 41 km from Al Khobar. Manama is 2.3 km away. Free WiFi is offered throughout the property and free private parking is available on site. All units have a flat-screen TV with satellite channels. There is also a kitchen, equipped with an oven, microwave and refrigerator. There is a private bathroom with bath robes and free toiletries in each unit. Towels are available. Guests can enjoy the on-site restaurant. Dhahran is 49 km from Juffair Pearl Apartments. Bahrain International Airport is 6 km from the property.

- Ratings: 2 Stars
- Type: Domestic
- Specialty: Urban
- Operator: Juffair Pearl Hotel Apartments
- No. of Keys: 44 Keys
- No. of Employees: 9 Employees
- Registration Date: 15/9/2009
- Area: Al Fateh
- Address: Building No. 684, Road No. 2411, Block No. 324